

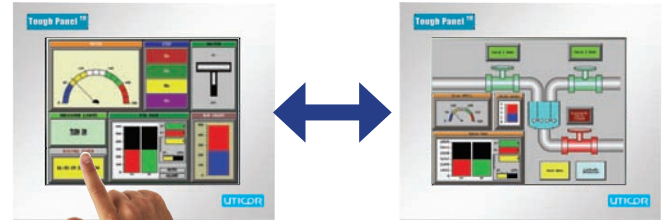
**Tough Panel™**

**Unique Features**

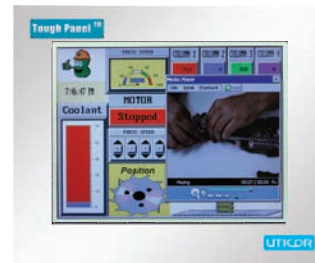
Your Choice of Operating System

The standard Uticor Toughpanel has a dedicated processor, as opposed to running on a computer platform. This offers a much faster response time for touch inputs, typically 0.75 seconds instead of slightly more than a second in a Windows CE environment. A Windows® device is inherently slower in response time because it has a lot of overhead to cover during start-up and operation. A dedicated processor uses less memory, does not require a boot-up, requires only 2MB to trend data, and is not subject to hardware tampering. Nor can it be infected with a virus from the Internet.

A Windows CE system has the advantage, however, of running user selected software in applications such as Word, Excel, Adobe Acrobat, PDF, and MPEG(Video). Many users desire to run a program to show machine operation or key maintenance issues. Others want to embed the Operating or Maintenance Manual as a PDF file. There are as many unique applications as memory available to run them.



INSTANTANEOUS TOUCH RESPONSE



Windows CE Touchpanel playing maintenance video!

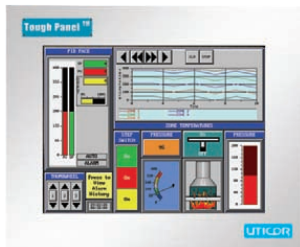
Which should I choose?

Complex automation systems with a built-in redundant design or non critical machinery or process applications may have tolerance for the shortcomings of a Windows based operating system. Smaller or simpler applications or those that require robust/critical operation or a fast operating speed may be best served by a dedicated processor. We offer both platforms. The programming software is the same for both.

You choose which is right for your application (uses same software)

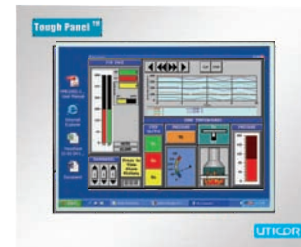
- 1: Dedicated Processor Touch Panel
- Motorola Coldfire 32-bit CPU operating at 40MHz
  - Fastest response time for touch inputs (typically 0.75 seconds)
  - Fast and simple flash-based operating system, easily field upgradeable
  - 512KB and 1MB battery back RAM
  - 512KB ,1MB, and 2MB Flash Memory
  - Will accommodate innovative NetView and Control card for Internet connectivity

- 2: The Window CE Touch Panel
- Same protocols supported as standard touch panel
  - Same programming software
  - Same screen sizes are available from 5.7" and up.
  - AMD Alchemy 333 MHz 32 Bit Processor
  - 32 MB Flash and 64 MB RAM built in
  - Compact Flash slot
  - 10/100 base-T Ethernet Port
  - USB Host Port
  - Network card for future expansion



Dedicated Processor  
**Higher Speed, Less Memory**

Seamless Migration between the two Operating Systems



CE Processor  
Windows Functions, More Memory