

# Save unnecessary Travel and Field service costs with Net View & Control

## Troubleshoot your Panel/Project Half way across the World without leaving your Desk!!

Toughpanels have an exclusive unique feature that allows you to view and control any screen on your touchpanel over the internet. Toughpanels with dedicated processor need an NVC option card whereas Toughpanels with Windows processor has this function built-in. This optional card has its own processor that allows remote monitoring and control. View and control operator screens over the internet from your PC as if you were right next to the touch panel on the factory floor. **This is also a great tool for management/quality personnel in any plant to monitor production over intranet.**

### NetView & Control (NVC) option card\*



NVC option card plugs into the extension connector of the Toughpanels. It has an Ethernet Port that allows a PC, anywhere in the world, to view any screen in the Panel in real-time as well as control the operation of the Panel using your mouse, also in real-time. This card can also be configured to send Emails from the Panel. As a side benefit NVC card also gives you the ability to store upto 2GB of Data in an SD card on-board. Each NVC card has a static I/P address assigned to it which is used to address the card/panel over the internet/intranet.



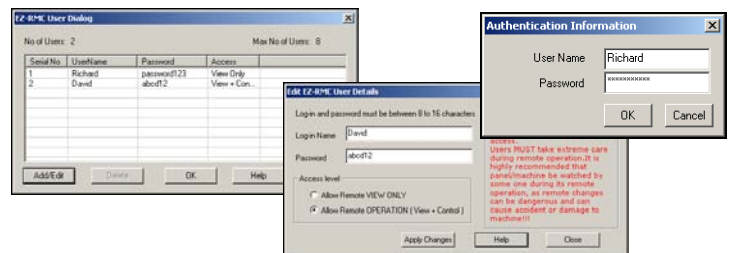
\*NOTE: NVC functionality is available even without NVC card by using serial RS232 port along with optional modem or radio modem.

### Built-in NetView & Control (NVC) in CE Toughpanel

Toughpanels with Windows CE Processor has a built-in Ethernet port that allows it to perform NetView and Control function without the need for the additional NVC optional card. It should however be noted that the response time of the CE Toughpanel would be slightly slower than the Toughpanel with dedicated processor and NVC option card, because the latter has a separate processor to perform the NVC function.

### High Level of Password Security

For Obvious reasons NVC feature has multiple levels of password protection.



### Monitor Machine/Process operation through the Panel



With UT-NVC software installed in your PC you could monitor any screen on the Touchpanel addressed by the software in Real-Time allowing system troubleshooting and/or management review of the machine operation.

### Control Machine/Process operation through the Panel



Under multiple password security UT-NVC software allows you to operate the Touchpanel just as if you are standing right next to it. Clicking on a mouse or entering a preset thru your PC in Chicago will perform the same actions as if an operator was doing the same on the touchscreen half way across the world.