

# UTDac Data Acquisition Software

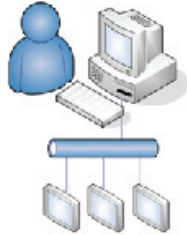
## Log Data For Any PLC Tag

Available on RS232 Serial Port as well as Ethernet

It's as Simple as **1=2=3**  
collect, save and store PLC tag data

### What is UTDac?

UTDac is a data acquisition utility, designed to collect and save tag data from one or more (connected and running) Toughpanels.

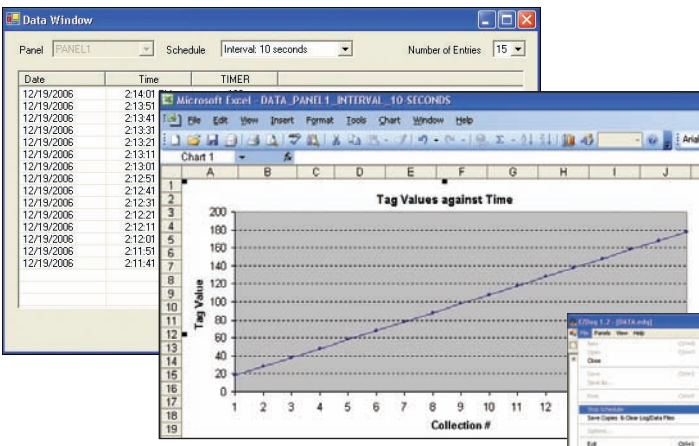


### What kind of communication medium is required?

UTDac works on both Ethernet as well as Serial communication medium.

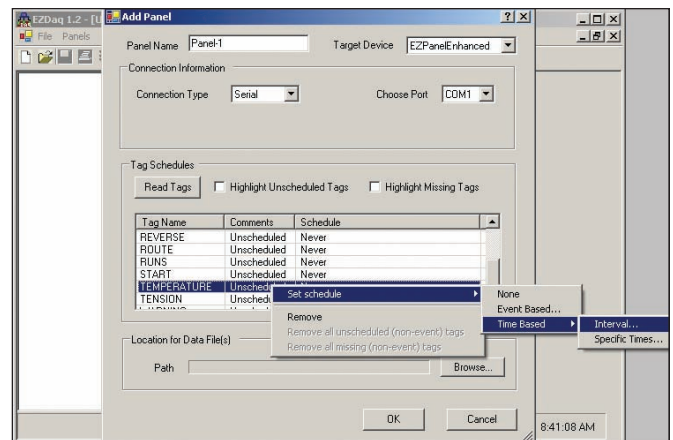
### How to view data?

Data files are organized in a convenient user selectable format (tab delimited or CSV) and can viewed in excel or any text editor.

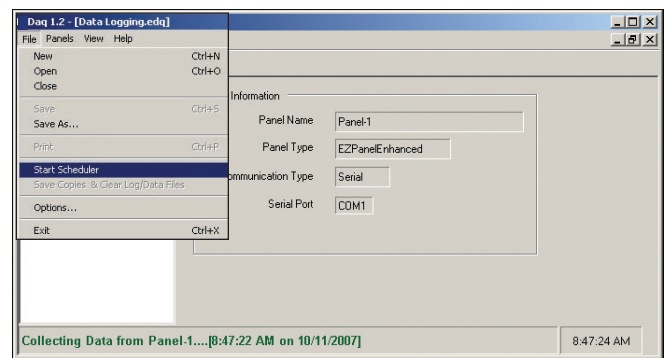


### How does it work?

- 1 Run the UTDac application on a PC to create a Data Acquisition Schedule file.
- 2 Specify the tags and a schedule for each tag for data acquisition.
- 3 The Schedule can be set either on the basis of time or an event.



- 4 While creating the Data Acquisition Schedule file, Panel (from which data has to be collected ) must be connected to the PC.
- 5 Once the Schedule file is created, the application can start collecting and storing acquired data.



## Math-logic/Multi-function Buttons, Scripting

**Move**  
Allows to Set a bit,  
Reset a bit,  
Variable=Constant,  
Variable1=Variable2

**Math**  
Absolute Value  
Add  
Division  
Modulo  
Multiplication  
Negate  
Round

**Logical**  
AND  
NOT  
OR  
Shift Left shift Right  
Subtract  
XOR

MULTI-FUNCTION

Toughpanels offer a sophisticated control, called the Multi-function Object. As the name implies, this Object allows you to perform multiple functions, including Mathematical and Logical operations on PLC data. For example, you can set/reset multiple bits & transfer constants or variables or expressions to tags. Remarkably, this Benefit allows a user to perform up to 20 operations with one Object. Toughpanel also allows you to perform these Multiple functions under the PLC control a very useful feature to offload mathematical & logical

computations from the ladder logic to the panel.

- 6 For the CE Toughpanels, you have an option to collect the data on the panel itself but to create the Schedule file, you still need a PC.

